



New metric tapped balls allow use with Extension Tubes and Spray Tips.

# BlackEye™

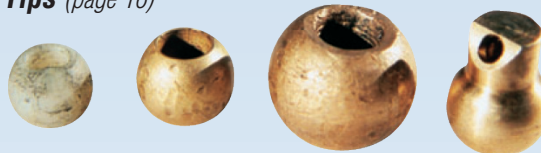


Available with tapped ball to allow quick plugging!

## SCREW-LOCK COOLANT NOZZLE FOR CNC LATHES

- An easy-to-aim replacement for screw-lock spherical coolant nozzles.
- Rated to 150 psi (10 bar) maximum ■ Sizes available to fit almost every machine or toolholder.
- Just install and tighten lock-screw once, then aim the stainless steel ball with the tip of your allen wrench.
- Choose tapped ball if you need to quickly plug the orifice (set screw included) or to use with **Extension Tubes** (page 17) or **Spray Tips** (page 16)

**BlackEye™** Nozzles replace these:

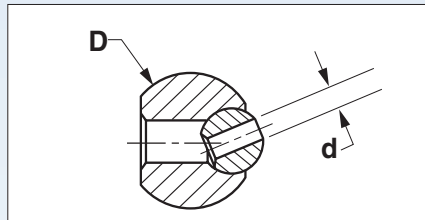


### DIMENSIONS IN INCHES (except as noted)

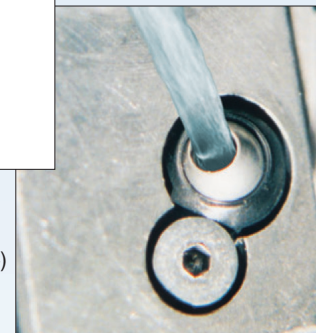
Part No.	Nom. Dia. "D"	Orifice Dia. "d"	Pkg Qty
BE00112	10 mm	.11	5
BE00212	10 mm	M3.5 x .6	5
BE00107	12 mm	.16	5
BE00222	12 mm	M4 x .7	5
BE00108	14 mm	.16	5
BE00232	14 mm	M4 x .7	5
BE00109	15 mm	.16	5
BE00242	15 mm	M4 x .7	5
BE02020	18 mm	.16	5
BE02032	18 mm	M5 x .8	5
BE00110	22 mm	.22	5
BE00252	22 mm	M6 x 1.0	5
BE00120	3/8 inch	.11	5
BE00262	3/8 inch	M3.5 x .6	5
BE00111	1/2 inch	.16	5
BE00272	1/2 inch	M4 x .7	5
BE02010	5/8 inch	.16	5
BE00282	5/8 inch	M4 x .7	5



**BlackEyes** shown in boring bar holder.



**Material:** Body - Acetal  
Ball - Stainless Steel  
**Max Operating Temperature:** 160°F (70°C)  
**Maximum Pressure:** 150 PSI (10 bar)



**BlackEye** installed on quick change turning tool.

**Ordering Information:** Measure the diameter of the original ball in your machine and order the nominal diameter to suit.